

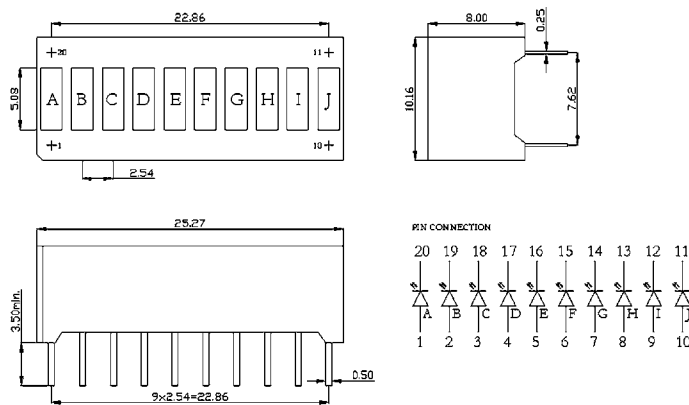
Bar Graph Arrays

Bar Graph Arrays

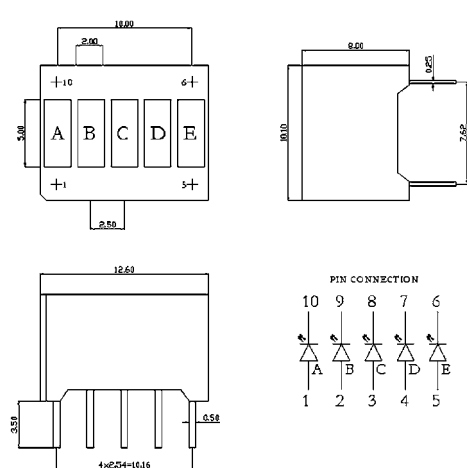
Type Type	Material Material	Wellenlänge Wavelength	Emittierende Farbe Emitting Colour	Lichtstärke Luminous Intensity		Segment- Bezeichnung Segment- Description
		typ. λ_{Peak} [nm]		I_V [μ cd], $I_F=10$ mA	Min. - Typ	
LL-10000-SRWD	GaAlAs	660 ●	Hyper-Red	5.600	– 31.000	A - K
LL-10000-GWD	GaP	567 ●	Green	2.200	– 5.600	A - K
LL-10000-YWD	GaAsP/GaP	590 ●	Yellow	2.200	– 5.600	A - K
LL-10000-EWD	GaAsP/GaP	635 ●	Super-Red	2.200	– 5.600	A - K
LL-10073-GHWD*	GaP	567 ●	Green	2.200	– 5.600	A - G
A-G green, H-K red	GaP	700 ●	Red	900	– 2.200	H - K
LL-10000-BWD-UR	InGaN	470 ●	Super-Blue	6.000	– 30.000	A - K
LL-5000-SRWD	GaAlAs	660 ●	Hyper-Red	5.600	– 31.000	A - E
LL-5000-GWD	GaP	567 ●	Green	2.200	– 5.600	A - E
LL-5000-YWD	GaAsP/GaP	590 ●	Yellow	2.200	– 5.600	A - E
LL-5000-EWD	GaAsP/GaP	635 ●	Super-Red	2.200	– 5.600	A - E
LL-5000-BWD-UR	InGaN	470 ●	Super-Blue	6.000	– 30.000	A - E

*Weitere Farbvarianten auf Anfrage./Further colours on request.

LL-10000



LL-5000



1. Alle Abmessungen sind in [mm] angegeben. Die Toleranz beträgt $\pm 0,25$ mm, sofern nicht anders angegeben

1. All dimensions are in [mm], Tolerance is ± 0.25 mm unless otherwise noted.