

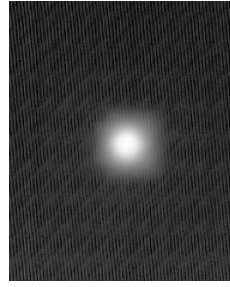
Cree® XP 20mm range

| Part No. | Optics on their own | Description | White | |
|----------|-----------------------|-------------|--|-------|
| | | | FWHM | EFF |
| 10193 | Plain Tight | | 8.2 | 87.3% |
| 10194 | Frosted Narrow | | 10.35 | 86.9% |
| 10208 | Ripple Medium | | 19.5 | 86.9% |
| 10195 | Frosted Medium | | 17.9 | 82.9% |
| 10209 | Ripple Wide | | 20.5 | 81.7% |
| 10196 | Frosted Wide | | 31.5 | 78.1% |
| 10170 | Wide Angle Reflector | | 72 | 92.2% |
| 10197 | Elliptical | | 47 X 8 | 86% |
| 10198 | Elliptical Orthogonal | | 8 X 47 | 85.6% |
| 10356 | Fibre | | Optimised for coupling into 0.5NA fibre bundles of 8 - 12mm diameter | |

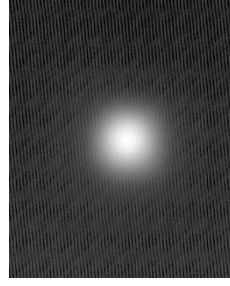
*Orthogonal is the elliptical beam turned through 90deg.

#Full Width Half Maximum i.e. total viewing angle

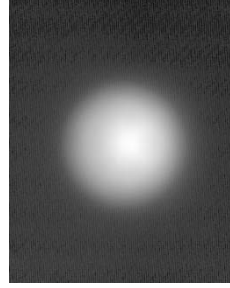
| Part No. | Colour | Description |
|----------|--------|---|
| 10566 | Black | Round Holder (Stocked) |
| 10567 | White | Round Holder (Not Stocked) |
| 10568 | Clear | Round Holder (Not Stocked) |
| 10569 | Black | Hex holder with feet (Stocked) |
| 10570 | Clear | Hex holder with feet (Not Stocked) |
| 10571 | White | Hex holder with feet (Not Stocked) |
| 10572 | Black | Hex holder (Stocked) |
| 10573 | Clear | Hex holder (Not Stocked) |
| 10574 | White | Hex holder (Not Stocked) |
| 10279 | White | 50mm Triple holder long leg (Not Stocked) |
| 10289 | White | 50 mm Triple holder short leg (Stocked) |
| 10299 | Black | 50 mm Triple holder Long leg (Not Stocked) |
| 10309 | Black | 50 mm Triple holder short leg (Not Stocked) |



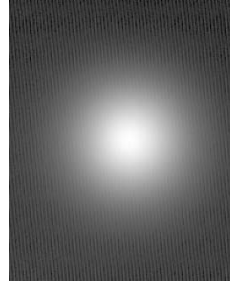
10193



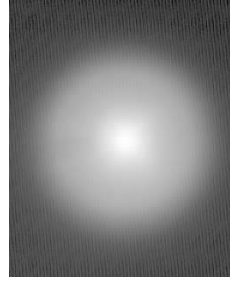
10194



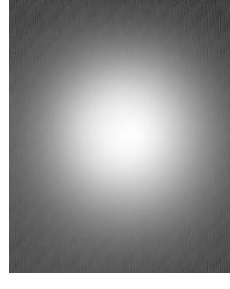
10208



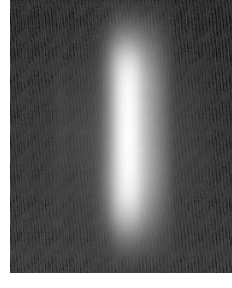
10195



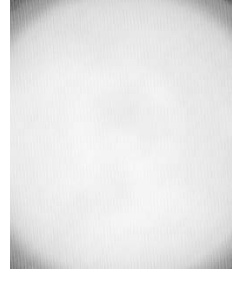
10209



10196



10197 & 10198



10170