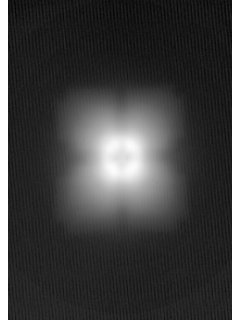
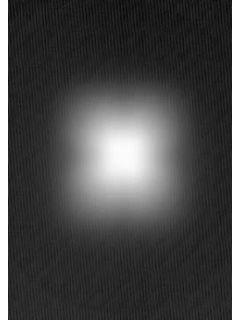


CREE XLamp® MC-E LED 20mm range

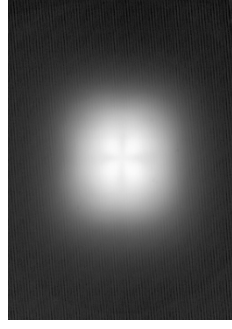
Part no.	Description	Cree MC-E		
		FWHM	EFF	Cd/I
10193	Plain tight	20	84.5	5.8
10194	Frosted Narrow	24	83	4.5
10208	Rippled Medium	29	82.5	3.3
10195	Frosted medium	27.5	78	2.6
10209	Ripple Wide	36.5	80	1.9
10196	Frosted Wide	45	70	1.4
10197	Elliptical	44 X 23	81	2.3
10198	Elliptical Orthogonal	22 X 44	80	2.5
10356	Fibre			



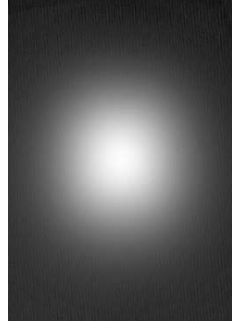
Tight plain fronted optic
10193 "the four chips are projected"



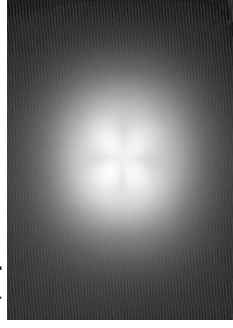
Narrow frosted optic
10194



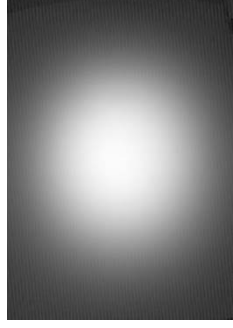
Medium rippled optic
10208



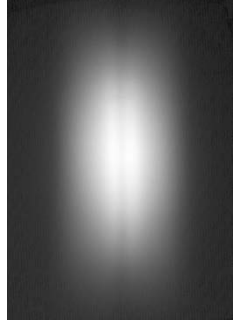
Medium frosted optic
10195



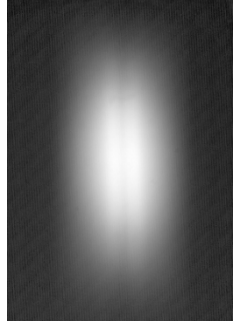
Wide rippled optic
10209



Wide frosted optic
10196



Elliptical 10197
"Note the dark line caused by the gap in the chips"



Elliptical orthogonal
10198
"Note the dark line caused by the gap in the chips"

Part No.	Colour	Description
10512	Black	Round MC-E Holder
10513	White	Round MC-E Holder
10514	Clear	Round MC-E Holder
10276	White	50mm Triple holder long leg
10286	White	50 mm Triple holder short leg
10296	Black	50 mm Triple holder Long leg
10306	Black	50 mm Triple holder short leg
10425	Black	Star board with feet
10426	Clear	Star board with feet
10427	White	Star board with feet
10428	Black	Star board with no feet
10429	Clear	Star board with no feet
10430	White	Star board with no feet

