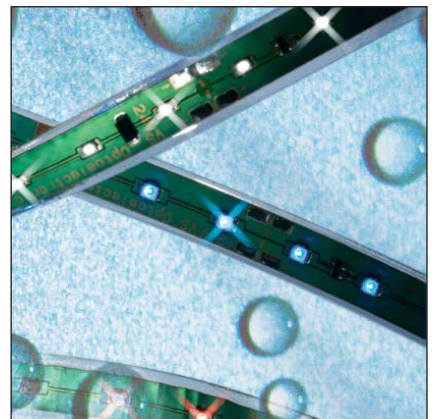
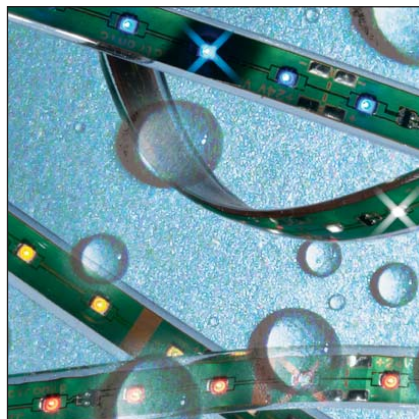
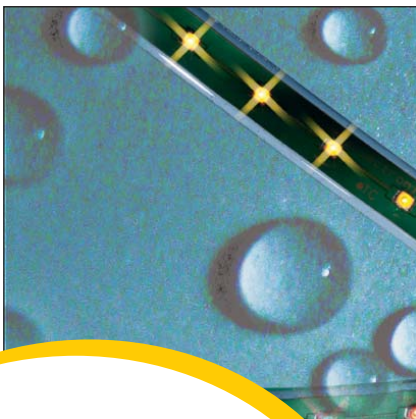




A New Lighting Experience



- extremely flexible line module with SMD- LEDs
- protected against high moisture: IP67
- available in different colours
- low mounting height
- low heat development
- lead-free soldered
- self-adhesive rear side

## LEDLine Flex SMD Outdoor

### WU-M-266-Outdoor

#### Typical Applications

- Illumination of complex structures with high moisture or dust burden
- Outdoor marking of paths, stairs, etc.
- Outdoor light advertising
- Outdoor entertainment, shop design, architectural illumination
- Outdoor boarder lighting

#### Vossloh-Schwabe Deutschland GmbH

Hohe Steinert 8 · 58509 Lüdenscheid, Germany · Phone: +49 (0) 23 51/101-0  
Fax: +49 (0) 23 51/101-217 + -384 · [www.vossloh-schwabe.com](http://www.vossloh-schwabe.com)

# LEDLine Flex SMD Outdoor

## Technical Notes

- PCB dimensions: 171 x 10 mm, 855 x 10 mm, 1710 x 10 mm  
Encapsulated dimensions (see tech. Drawing)  
PCB 171 mm: A= 177 mm  $\pm 0.5$   
PCB 855 mm: A= 861 mm  $\pm 0.5$   
PCB 1710 mm: A= 1716 mm  $\pm 0.5$
- IP classification: IP67
- Pre-assembled with 2 strands on both sides
- Voltage supply: 24 V DC

## Electrical Characteristics

at ambient temperature  $t_a = 25\text{ }^\circ\text{C}$

Type	Ref. No.	Colour	Number of SMDs	Current* mA	Voltage DC* V	Power* W
WU-M-266-SO-Outdoor 171mm	<b>545411</b>	Red	9	22	24	0.528
WU-M-266-SO-Outdoor 855mm	<b>545412</b>	Red	45	110	24	2.640
WU-M-266-SO-Outdoor 1710mm	<b>545413</b>	Red	90	220	24	5.280
WU-M-266-SG-Outdoor 171mm	<b>545408</b>	Green	10	44	24	1.056
WU-M-266-SG-Outdoor 855mm	<b>545409</b>	Green	50	220	24	5.280
WU-M-266-SG-Outdoor 1710mm	<b>545410</b>	Green	100	440	24	10.560
WU-M-266-SB-Outdoor 171mm	<b>545392</b>	Blue	10	44	24	1.056
WU-M-266-SB-Outdoor 855mm	<b>545406</b>	Blue	50	220	24	5.280
WU-M-266-SB-Outdoor 1710mm	<b>545407</b>	Blue	100	440	24	10.560
WU-M-266-SY-Outdoor 171mm	<b>545414</b>	Yellow	9	22	24	0.528
WU-M-266-SY-Outdoor 855mm	<b>545415</b>	Yellow	45	110	24	2.640
WU-M-266-SY-Outdoor 1710mm	<b>545416</b>	Yellow	90	220	24	5.280
WU-M-266-W2-Outdoor 171mm	<b>545383</b>	White	10	44	24	1.056
WU-M-266-W2-Outdoor 855mm	<b>545384</b>	White	50	220	24	5.280
WU-M-266-W2-Outdoor 1710mm	<b>545385</b>	White	100	440	24	10.560
WU-M-266-W3-Outdoor 171mm	<b>545386</b>	White	10	44	24	1.056
WU-M-266-W3-Outdoor 855mm	<b>545387</b>	White	50	220	24	5.280
WU-M-266-W3-Outdoor 1710mm	<b>545388</b>	White	100	440	24	10.560
WU-M-266-WW2-Outdoor 171mm	<b>545389</b>	Warm white	10	44	24	1.056
WU-M-266-WW2-Outdoor 855mm	<b>545390</b>	Warm white	50	220	24	5.280
WU-M-266-WW2-Outdoor 1710mm	<b>545391</b>	Warm white	100	440	24	10.560

RGB modules see separate data sheet.

## Maximum Ratings

Exceeding the maximum ratings can lead to reduction of lifetime or destruction of the module.

Type	Voltage DC		Ambient temperature range for operation		Storage temperature range		Handling temperature range		Reverse voltage/LED V
	V min.	V max.	$^\circ\text{C}$ min.	$^\circ\text{C}$ max.	$^\circ\text{C}$ min.	$^\circ\text{C}$ max.	$^\circ\text{C}$ min.	$^\circ\text{C}$ max.	
All types	23	25	-20	+50	-40	+85	+10	+50	5

The values contained in this data sheet can change due to technical innovations. Any such changes will be made without separate notification. Please find further detailed information at [www.vs-optoelectronic.com](http://www.vs-optoelectronic.com).

# LEDLine Flex SMD Outdoor

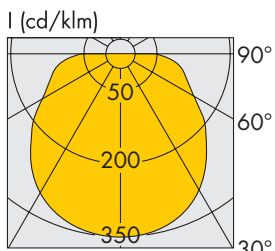
## Optical Characteristics

at ambient temperature  $t_a = 25\text{ }^\circ\text{C}$

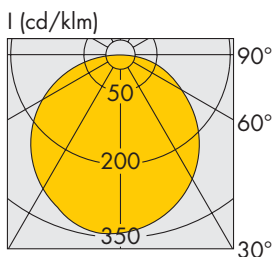
Type	Ref. No.	Colour	Dom wavelength* (nm) Colour temperature* (K)	Luminous flux* lm	Radiation angle* °
WU-M-266-SO-Outdoor 171mm	<b>545411</b>	Red	625	13	120
WU-M-266-SO-Outdoor 855mm	<b>545412</b>	Red	625	65	120
WU-M-266-SO-Outdoor 1710mm	<b>545413</b>	Red	625	130	120
WU-M-266-SG-Outdoor 171mm	<b>545408</b>	Green	530	11	120
WU-M-266-SG-Outdoor 855mm	<b>545409</b>	Green	530	55	120
WU-M-266-SG-Outdoor 1710mm	<b>545410</b>	Green	530	110	120
WU-M-266-SB-Outdoor 171mm	<b>545392</b>	Blue	470	5	120
WU-M-266-SB-Outdoor 855mm	<b>545406</b>	Blue	470	25	120
WU-M-266-SB-Outdoor 1710mm	<b>545407</b>	Blue	470	50	120
WU-M-266-SY-Outdoor 171mm	<b>545414</b>	Yellow	590	15	120
WU-M-266-SY-Outdoor 855mm	<b>545415</b>	Yellow	590	75	120
WU-M-266-SY-Outdoor 1710mm	<b>545416</b>	Yellow	590	150	120
WU-M-266-W2-Outdoor 171mm	<b>545383</b>	White	5000K	23	120
WU-M-266-W2-Outdoor 855mm	<b>545384</b>	White	5000K	112	120
WU-M-266-W2-Outdoor 1710mm	<b>545385</b>	White	5000K	224	120
WU-M-266-W3-Outdoor 171mm	<b>545386</b>	White	6600K	38	120
WU-M-266-W3-Outdoor 855mm	<b>545387</b>	White	6600K	190	120
WU-M-266-W3-Outdoor 1710mm	<b>545388</b>	White	6600K	380	120
WU-M-266-WW2-Outdoor 171mm	<b>545389</b>	Warm white	2800K	30	120
WU-M-266-WW2-Outdoor 855mm	<b>545390</b>	Warm white	2800K	150	120
WU-M-266-WW2-Outdoor 1710mm	<b>545391</b>	Warm white	2800K	300	120

\* On account of the complex manufacturing process of the modules the above values only represent statistical variables.  
The values do not necessarily correspond exactly to the actual parameters of every single product which can vary from the typical specification.

## Light Distribution Curves

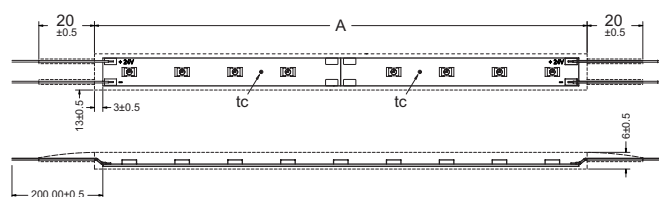


**WU-M-266-W2, W3, WW2**

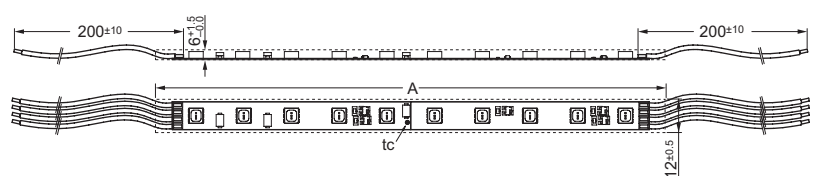


**WU-M-266-SO, -SY, -SB, -SG**

## Mechanical Dimensions



**LEDLine Flex Outdoor Monochrom**



**LEDLine Flex Outdoor RGB**

The values contained in this data sheet can change due to technical innovations. Any such changes will be made without separate notification.  
Please find further detailed information at [www.vs-optoelectronic.com](http://www.vs-optoelectronic.com).

# LEDLine Flex SMD Outdoor

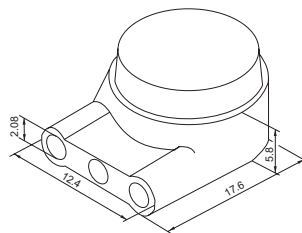
## Assembly and Safety Information

- LEDLine Flex SMD Outdoor must not be operated in rolled-up condition.
- The circuit path must not be damaged or interrupted.
- Power supply units must be used for operation, in which the following protective measures are ensured:
  - Short-circuit protection
  - Overload protection
  - Overheating protection
  - SELV equiv. (Safety Extra Low Voltage)
- Please ensure the correct polarity of the leads prior to commissioning. Reversed polarity can destroy the modules.
- The maximum output of the power supply must be observed.
- Please ensure standard ESD (electrostatic discharge) protection measures are employed when handling and installing LED modules. Electrostatic discharge can damage LEDs.
- The separation of the LEDLine Flex SMD Outdoor is possible through carefully cutting by means of scissors after 85.5 mm (white, green, blue) and after 171 mm (red, yellow and RGB).  
After cutting, the IP-classification IP67 is not guaranteed furthermore.
- An adhesive foil is furnished on the back side of the LEDLine Flex SMD Outdoor modules for easy mounting. The non-aging and UV stable glue can be used for outdoor applications on smooth and rugged surfaces. Please ensure adhesive pads or other products with adhesive areas are only used on dry and clean surfaces that are free of grease, oil, silicone and dirt particles. Owing to the varying application options and different types of surface as well as ambient conditions, VS accepts no liability for the quality of the adhesive bond achieved when mounting these products. If necessary use additional fixing for installation.
- The product must be stored no longer than 12 months (in packed condition) at approx. 20 °C and at up to 50 % relative humidity in order to ensure optimal bonding of the back side.
- The LEDLine Flex SMD Outdoor is pre-assembled with 2 strands of 200 mm on both sides. Avoid short circuits.
- A minimum bending radius is not to fall short of 50 mm during the installation. The bending is only allowed lengthwise. A bending in cross direction can destroy the module.
- LEDLine Flex modules must be mounted on a firm, permanent surface. To prevent damage due to bending, LEDLine Flex modules must not be stuck to flexible substrates.
- The installation/handling of the LEDLine Flex SMD Outdoor or the bending is only allowed at a module temperature of 10 °C to 50 °C.

## Recommended Connector

3M Scotchlok Outdoor connector UR2  
Humidity resistant connector filled with sealant  
Strand diameter: 0.4–0.9 mm

**Ref. No.: 534992**



The values contained in this data sheet can change due to technical innovations. Any such changes will be made without separate notification. Please find further detailed information at [www.vs-optoelectronic.com](http://www.vs-optoelectronic.com).