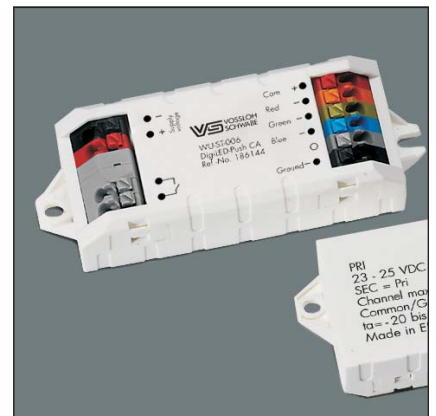




A New Lighting Experience



- custom colour control
- possibility to call up pre-set colour programs
- independent brightness control
- operation of Low- and High Power LED modules possible
- dimming of single-colour LED modules possible

DigiLED CA

Colour Control Modules

- DigiLED manual CA
- DigiLED DALI CA
- DigiLED DMX CA
- DigiLED IR CA
- DigiLED Push CA
- DigiLED Mono CA
- DigiLED Slave CA Active/Passive

Vossloh-Schwabe Deutschland GmbH

Hohe Steinert 8 · 58509 Lüdenscheid, Germany · Phone: +49 (0) 23 51/101-0
Fax: +49 (0) 23 51/101-217 + -384 · www.vossloh-schwabe.com

DigiLED CA

The DigiLED CA series is based on a system design that combines simplicity, flexibility and reliability. The DigiLED CA series is suitable for operating both High-Power RGB CA modules and Low-Power RGB CA modules.

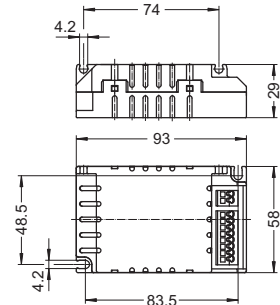
In the simplest case, a keypad enables manual colour control. In addition to custom colour control, it is also possible to call up pre-set colour programs for example colour sequences.

Technical Details

- Ambient temperature t_a : -20 to 45 °C
- Operating voltage: 24 V DC
- Max. current on the supply line: 5 A
- Connectors: push-in terminals: 0.25–1.5 mm², grid: 3.5 mm
- All DigiLED not suitable for the US market

The CA series of VS colour control modules are available with both a manual operating pad and a DALI interface or "Push" variant.

Furthermore the DigiLED Mono is available. The DigiLED Mono enables the dimming of single-colour (e. g. white) LED-modules. Detailed product description can be found in the respective datasheets at www.vs-optoelectronic.com.



DigiLED Manual CA

- Colour controls via key pads (6 keys)
- Individual colour control or selection of pre-set programs
- t_a = -20 to +45 °C
- t_c = 55 °C max.
- Max. current per control channel: 1.25 A
- Type: WU-ST-001-Digi-manuell-CA
- Ref. No.: 186136**



DigiLED DALI CA

- Digital colour controls via DALI light management
- t_a = -20 to +45 °C
- t_c = 60 °C max.
- Max. current per control channel: 1.25 A
- Type: WU-ST-004-Digi-DALI-CA
- Ref. No.: 186138**



DigiLED IR CA

- Colour adjustment by a portable remote control
- Call up of pre-adjusted setting possible
- data transfer via infra-red
- t_a = -20 to +45 °C
- t_c = 55 °C max.
- Max. current per control channel: 1.25 A
- Type: WU-ST-005-Digi-IR-CA
- Ref. No.: 186154**



The values contained in this data sheet can change due to technical innovations. Any such changes will be made without separate notification. Please find further detailed information at www.vs-optoelectronic.com.

DigiLED DMX CA

Digital colour controls via DMX light management

$t_a = -20$ to $+45$ °C

$t_c = 60$ °C max.

Max. current per control channel: 1.25 A

Type: WU-ST-003-DigiLED-DMX-CA

Ref. No.: 186153



DigiLED Push CA

Colour adjustment by separate push button

Permits retrieval of pre-set programs

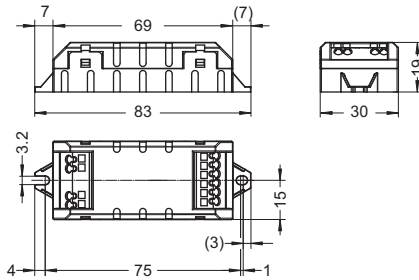
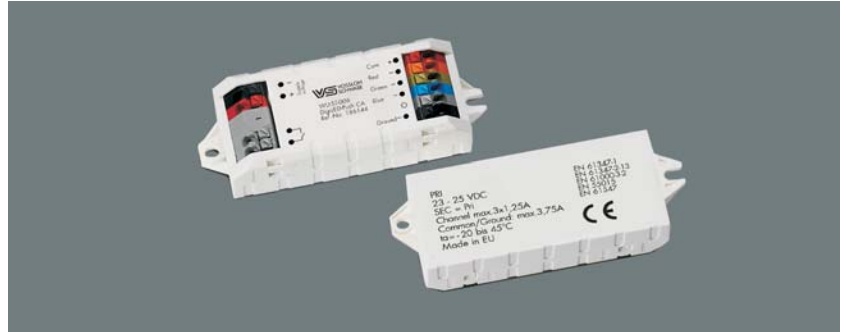
$t_a = -20$ to $+45$ °C

$t_c = 55$ °C max.

Max. current per control channel: 1.25 A

Type: WU-ST-006-DigiLED-Push CA

Ref. No.: 186144



DigiLED Mono CA

For dimming of single-colour LED modules

Dimming via 1-10 V interface or external

PWM signal

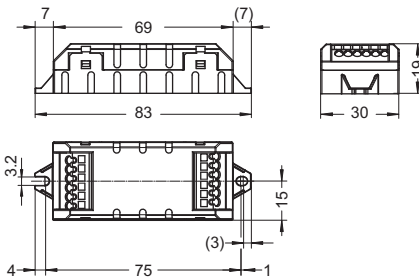
$t_a = -20$ to $+45$ °C

$t_c = 55$ °C max.

Max. current per control channel: 5 A

Type: WU-ST-010-DigiLED-Mono CA

Ref. No.: 186155



The values contained in this data sheet can change due to technical innovations. Any such changes will be made without separate notification. Please find further detailed information at www.vossloh-schwabe.com.

DigiLED Slave CA

Increase of the system performance
for 24 V CA LED assembly system

Signal amplification on channels RGB(W)

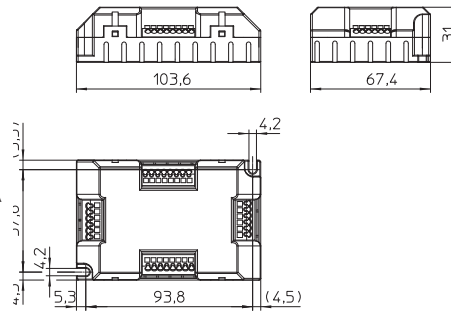
$t_a = -20$ to $+45$ °C

$t_c = 65$ °C max.

Max. current per control channel per slave: 1.25 A

Type: WU-ST-002-DigiLED-Slave CA

Ref. No.: 186142



Passive Slave CA

Increase of the system performance
for 24 V CA LED assembly system

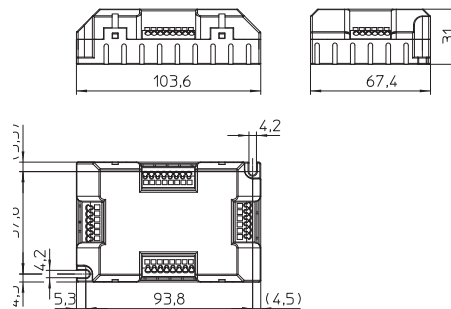
No signal amplification on channels RGB(W)

$t_a = -20$ to $+45$ °C

$t_c = 65$ °C max.

Type: WU-ST-011-Passive-Slave CA

Ref. No.: 186172



Slave PCB CA

PCB for increase of the system performance
for 24 V CA LED assembly system

Without casing

No signal amplification on channels RGB(W)

$t_a = -20$ to $+45$ °C

$t_c = 65$ °C max.

Type: WU-VB-004-Slave-PCB CA

Ref. No.: 186140

